

Welcome to Siteworks

Site information | University organisers

Siteworks

Siteworks is a community facility available to a diversity of programs and initiatives, big and small, experimental and mainstream for short term hourly, daily and weekly bookings and long term creative industry and social organisations.

Siteworks opening hours

- 9am - 10pm Monday - Friday
- 9am - 6pm Saturday and Sunday
- Closed on public holidays

Contact

- info@saxonstreet.com
- 0427 901 170

Siteworks is a place of business for over 20 businesses and organisations and is the regular workplace for countless numbers of creative professionals. The maintenance of the healthy Siteworks community culture is extremely important to us. University activities can converge smoothly with the Siteworks daily hum when students and staff bring respectful attitudes to the site, other site users and the Siteworks staff.

We ask Universities to incorporate ethical and sustainable design principles to the processes and content of their activities to reduce waste levels on site.

Facilities

Flat access

- Siteworks has flat access for all the ground floor buildings
- First floor levels are not wheelchair accessible
- We have one accessible toilet that does not reach current DDA standards
- Vehicles can drive to the autodidactic yard at 5km/hour for loading only after making contact with Siteworks staff

Parking

- Public transport to Siteworks is excellent. Train, tram & bus stop within 6 mins walk
- Open air bike parking provided on site
- No car parking on the grounds or on Saxon Street

Communal spaces

- Shared site kitchens for all site users. Everyone to clean up after themselves to keep this a happy share house
- Coffee machine to be used only after induction. \$2 per coffee
- Lecturers/organisers to clean up kitchen spaces after students at the end of the day as required
- Siteworks has a no plastic policy. No single use plates, cups, cutlery is allowed

- Toilets are gender neutral on site
 - If you are working with a community where this is an issue please talk to Siteworks staff prior to booking to organise a solution
-

Site use expectation

Site visit

- We require an on site meeting with University organiser and Siteworks management prior to any bookings.

Induction

- Siteworks staff will provide a site induction on the first hour

OHS

- Risk assessments to be done by organiser where required
- Adequate staff : students ratio to ensure safety on site
- On - going risk reduction by staff and students
- Students and staff responsible for the safety of their items

Cleaning

- Rooms are to be left clean and tidy for the next booking
- Vacuums, brooms and cleaning items will be provided to the organiser
- Recycling and general waste bins are to be managed efficiently
- Large scale installations are to be taken off site at the end of the booking

Storage

- Minimal storage available on site

Documentation

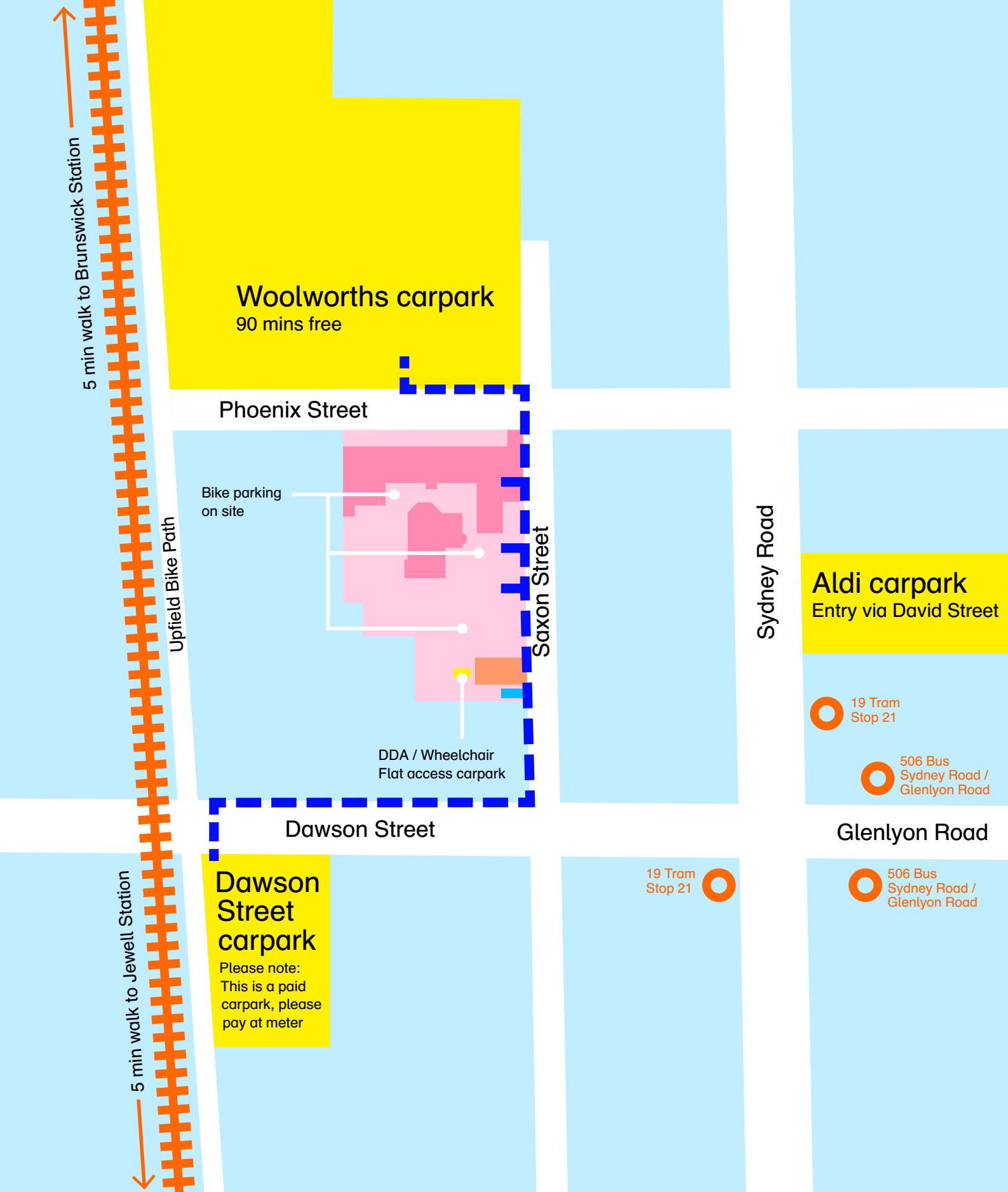
- As part of our reporting to council we will document and advise when Universities are using the site
 - We request copies photo and video documentation including photographer credits
 - We appreciate tags to @siteworks_ on instagram
-

Costs

The upstairs Old House meeting room has been allocated for University studio use and is offered in kind. When the requirements of University activity exceed the meeting room some costs are unavoidable. This will be discussed and agreed upon during initial site visit.

Some costs may include:

- Room hire fee
- Site manager for larger scale exhibitions and installations
- Cleaning costs
- Staffing for outside opening hours and public events with bar
- Bar tab for event specific and/or daily tea and coffee use
- Bins if extra waste management is required

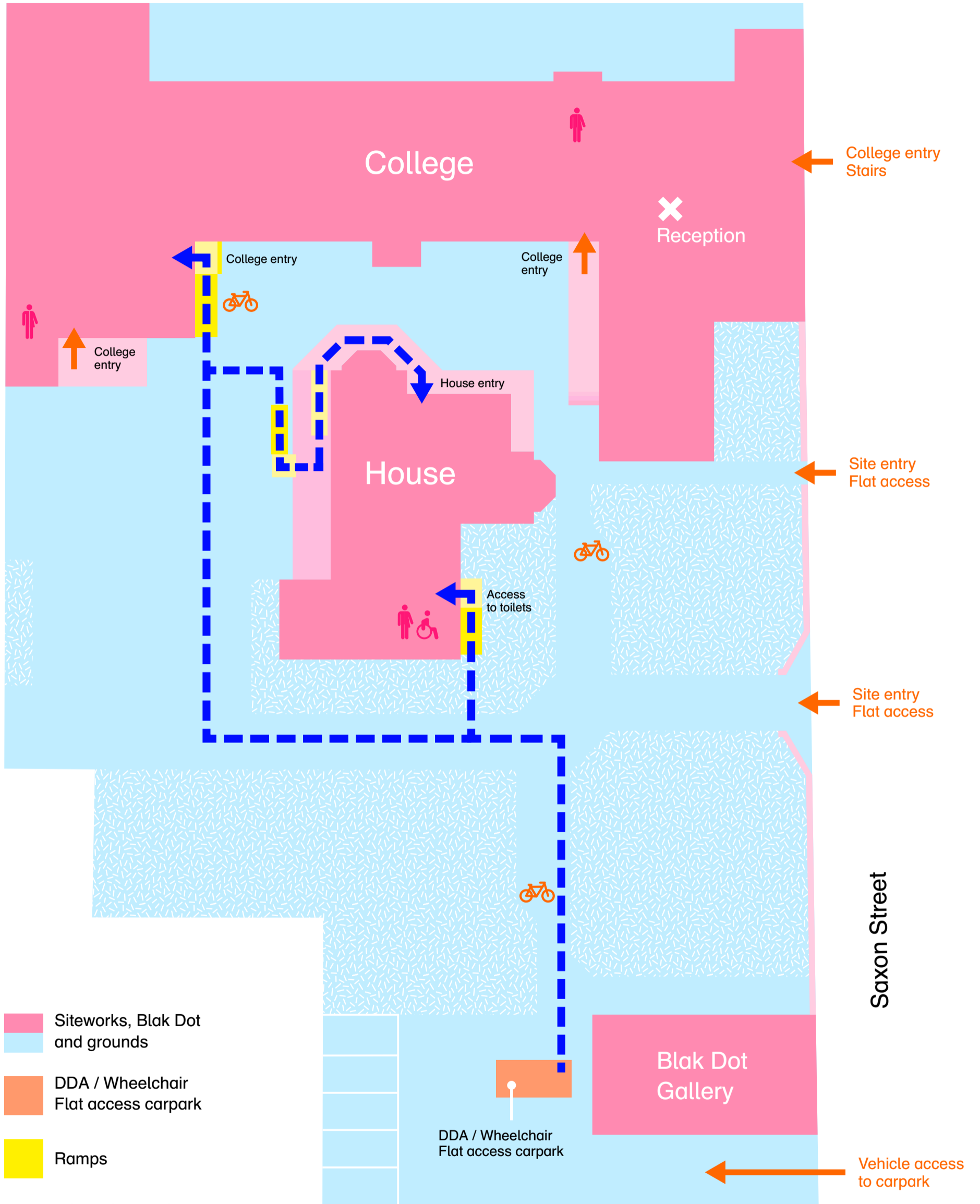


Siteworks 33 Saxon Street

Parking and Pedestrian Access Map

-  Public Transport
Trains, Trams, Buses
-  Pedestrian pathways
from carparks
-  Siteworks
carpark entry
-  Siteworks
and grounds
-  Blak Dot
Gallery
-  Carparks

Phoenix Street



Siteworks, Blak Dot and grounds

DDA / Wheelchair Flat access carpark

Ramps

Wheelchair pathways from carpark

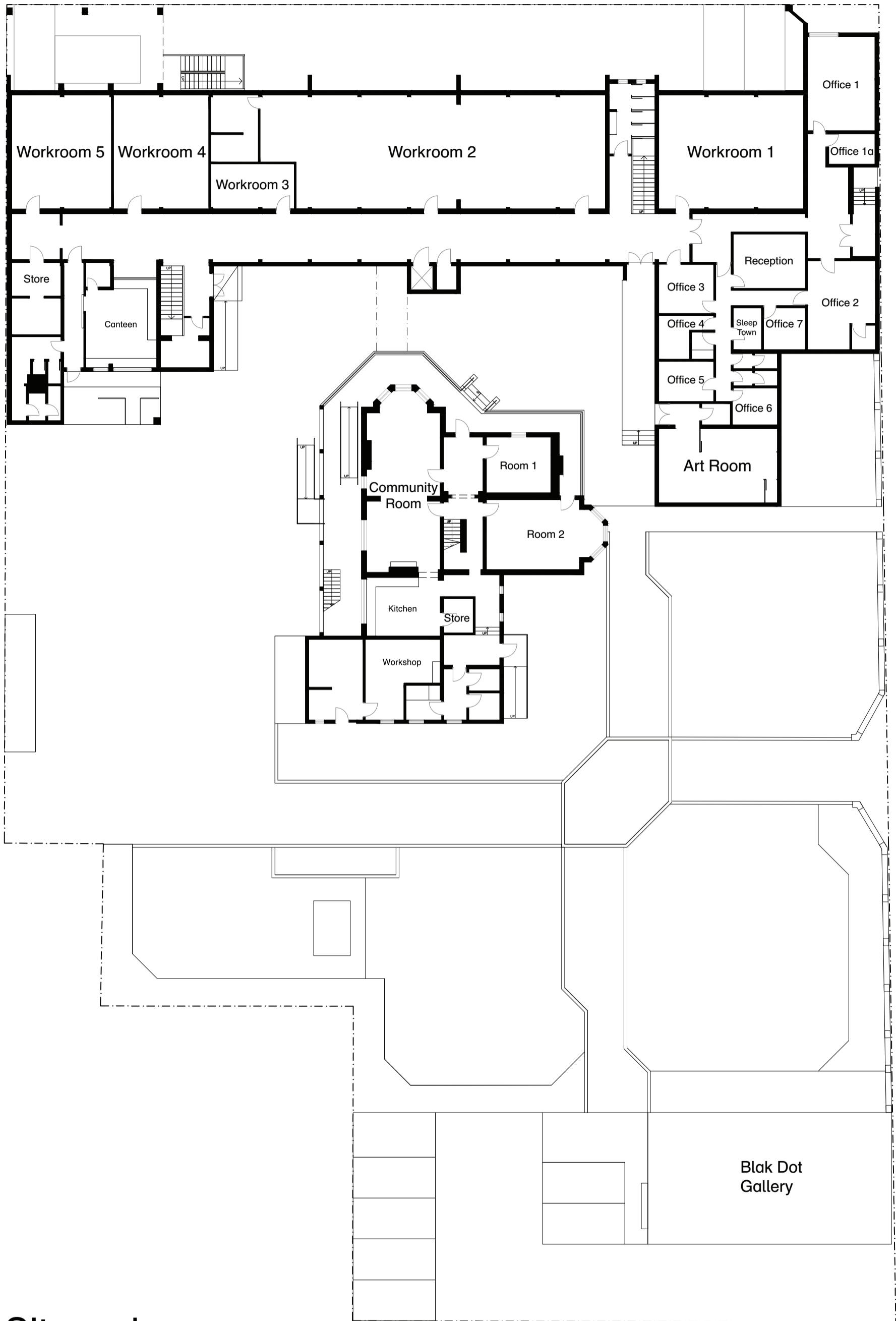
Bike parking

Unisex toilets

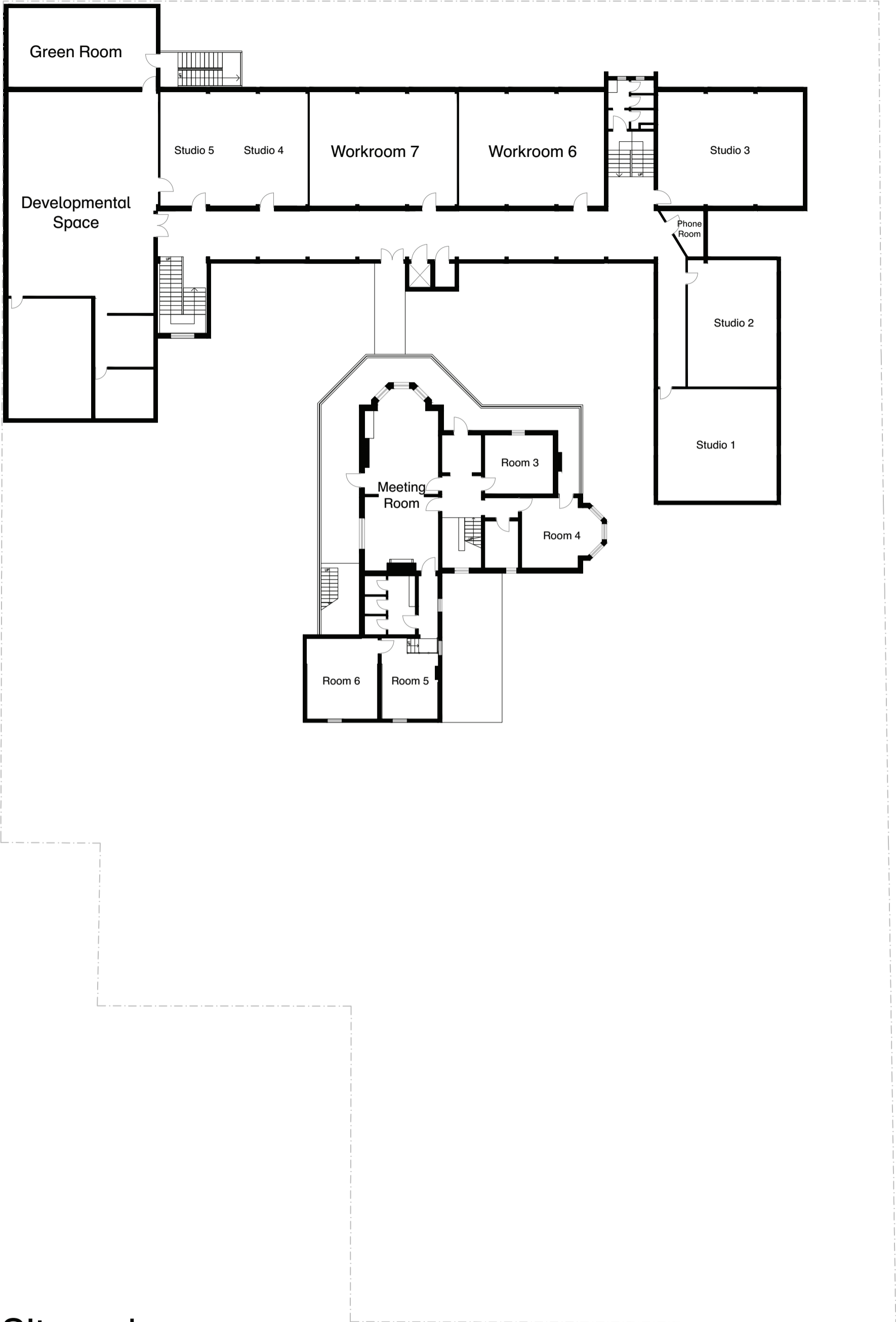
Wheelchair accessible toilets

Siteworks 33 Saxon Street

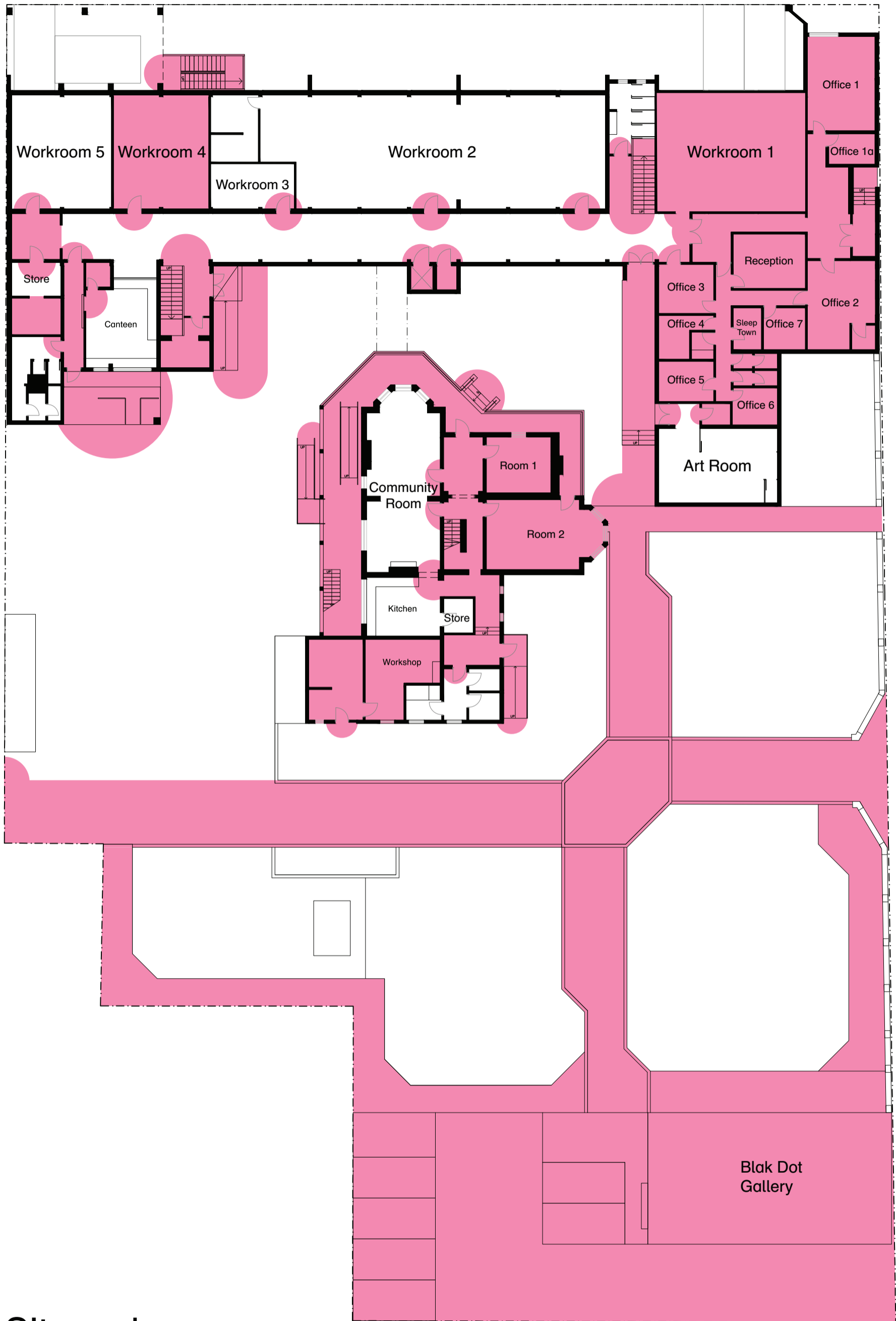
Wheelchair and Building Access Map



Siteworks
33 Saxon Street



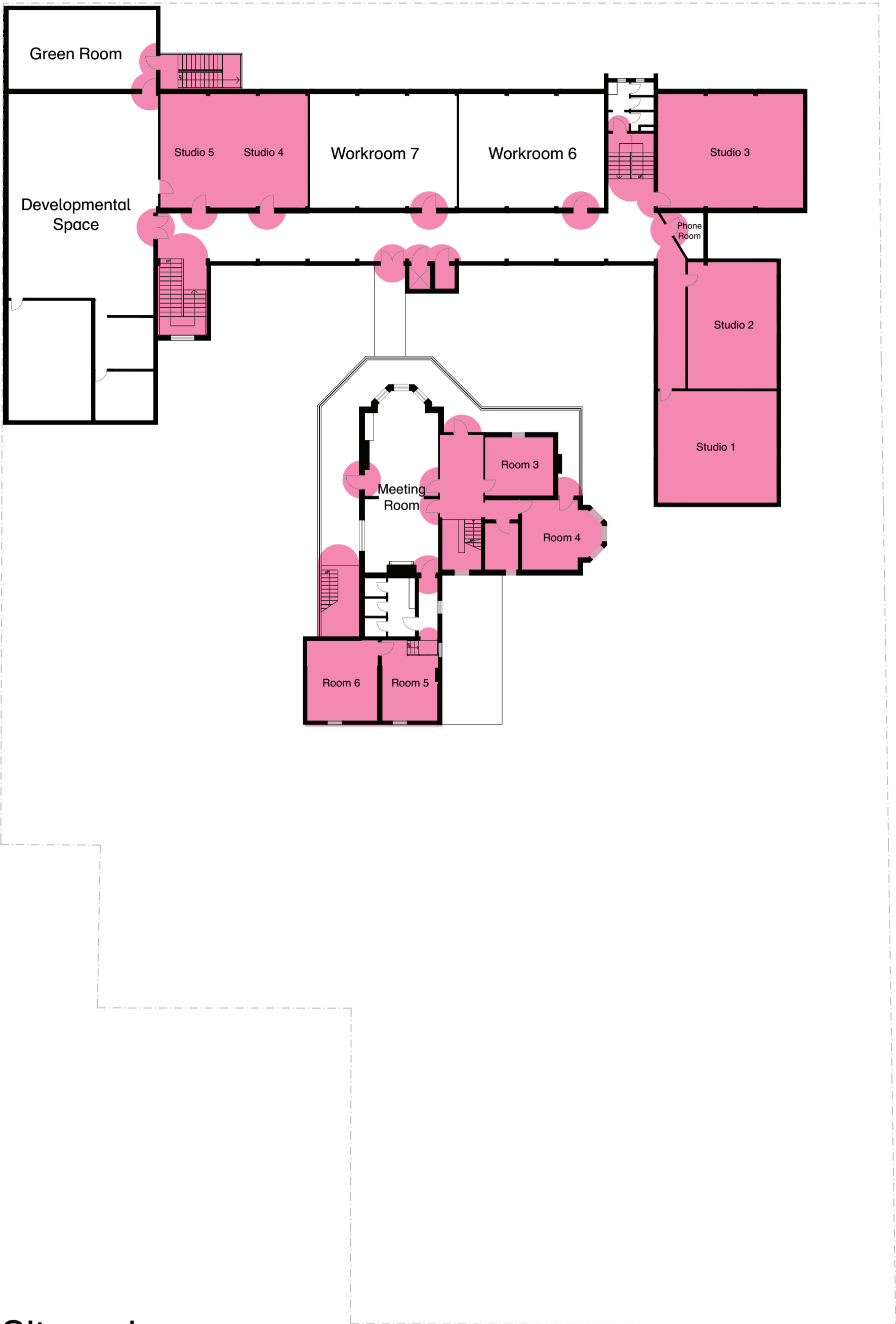
Siteworks
33 Saxon Street



**Siteworks
33 Saxon Street**

Wheelchair and Building Access Map

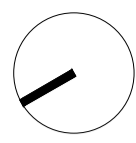
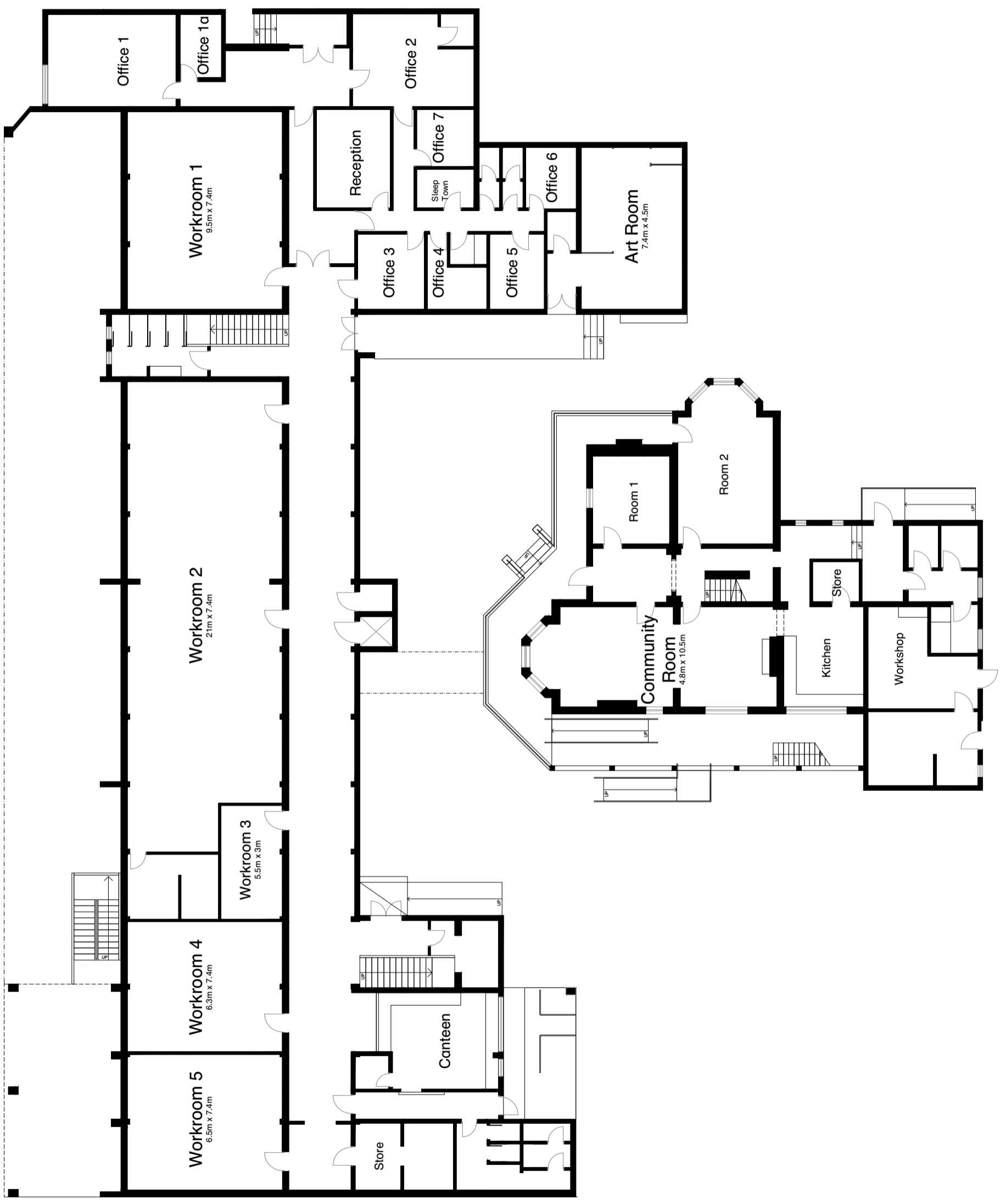
 Do Not Obstruct



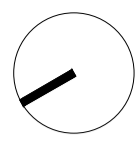
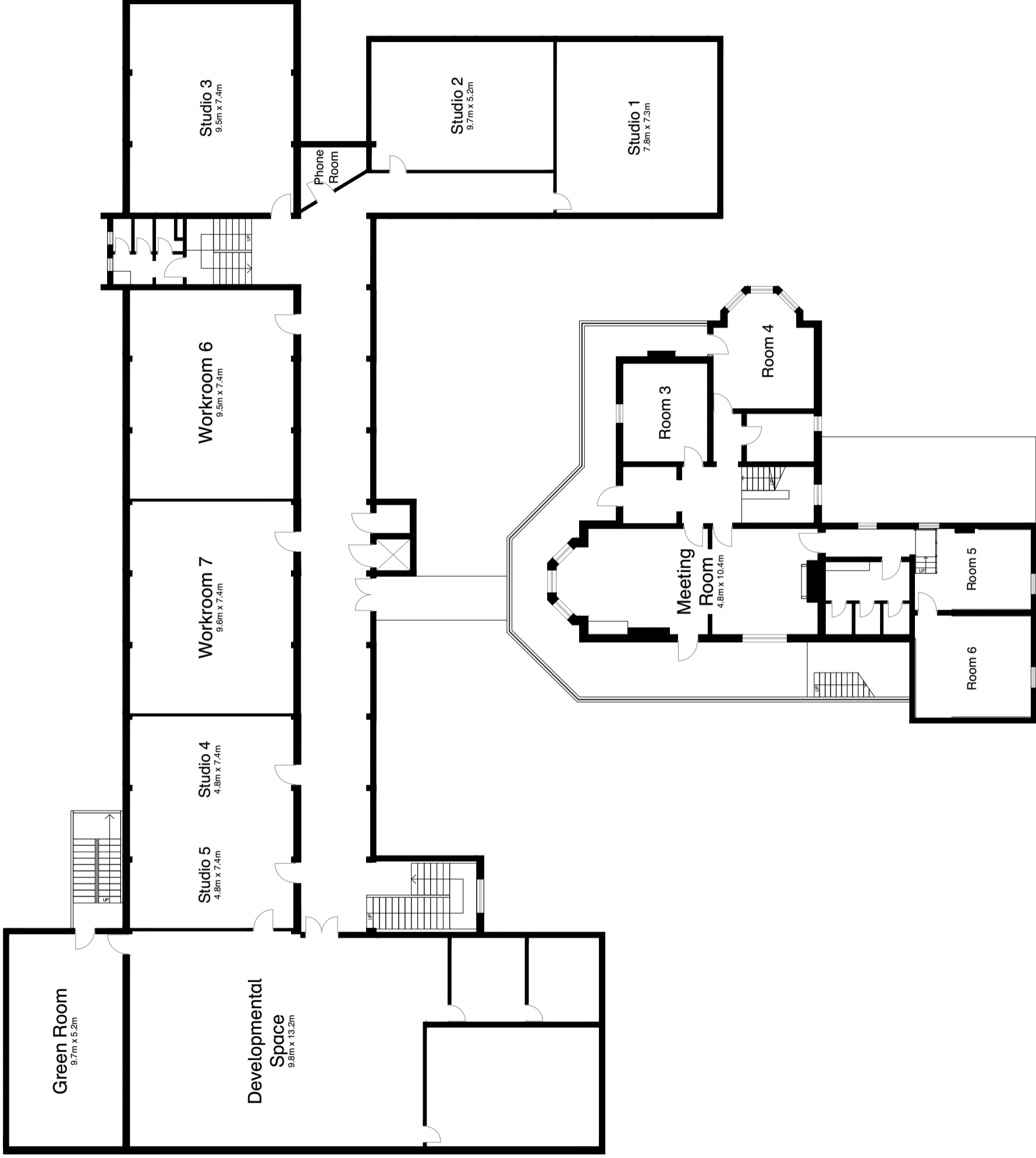
Siteworks 33 Saxon Street

Wheelchair and Building Access Map

 Do Not Obstruct



Siteworks / Ground



Siteworks / Level 1